



**KTU**  
1955 KARADENİZ  
TECHNICAL UNIVERSITY

**KARADENİZ TECHNICAL UNIVERSITY**  
RESEARCH UNIVERSITY

TRABZON | 2025

Update : 01 | 01 | 2025

## Foundation I History



Established on May 20, 1955 and having launched education in 1963, Karadeniz Technical University provides education in the fields of Technical Sciences, Natural Sciences, Humanities and Health Sciences. In addition, it aims to educate qualified and professional individuals with Vocational Colleges, which are one of the most important educational Institutions that will meet the technical needs of our city, region, and country. Likewise, it prepares highly qualified individuals and academic staff for the future through its graduate schools in line with the needs of Turkey.





## Foundation I History

Founded with the approval of the bill proposed by Trabzon Deputy Mustafa Reşit Tarakçıoğlu and his twenty-eight comrades by the law dated 20 May 1955 and numbered 6594, KTU is the first university of Türkiye established outside İstanbul and Ankara. About 8 years after its foundation, Faculties of Basic Sciences, Civil Engineering and Architecture, Mechanical and Electrical Engineering, and Forestry were established through the assignment of staff for the rector's office and faculties under the law no. 336 dated 19 September 1963. The university commenced its educational activities in the building of Atatürk Primary School located in the Esentepe neighborhood in Trabzon on 2 December 1963. Later in 1966, it moved to its current campus. Continuing to its development, KTU assigned faculty staff to the faculties of Earth Sciences and Medicine with the law no. 1659 dated 4 January 1973. Following the enactment of the Law on Higher Education no. 2547 in 1981, the university accelerated its expansion by opening new faculties and departments.



History



## Logo | Emblem



The first logo from the opening ceremony



Our logo meaning universe, science and human



Emblems used until 2000



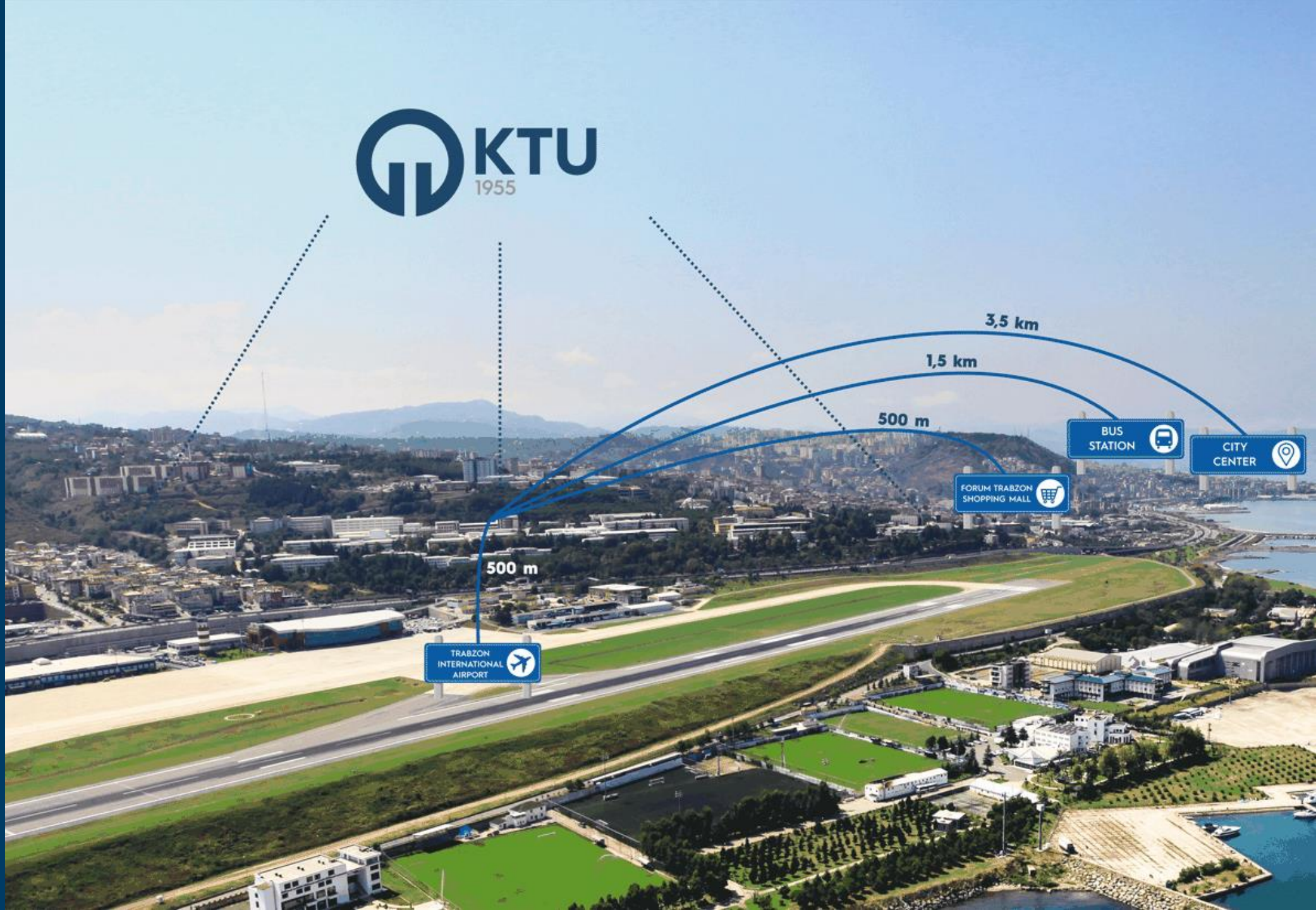
Logos used between 2015-2020



## Logo | Emblem



The design of the Karadeniz Technical University emblem dates back to 1968. This emblem comprises the concepts human, science and the universe that brings them together.



TRABZON INTERNATIONAL AIRPORT

FORUM TRABZON SHOPPING MALL

BUS STATION

CITY CENTER

500 m

500 m

1,5 km

3,5 km



### Physical Facilities

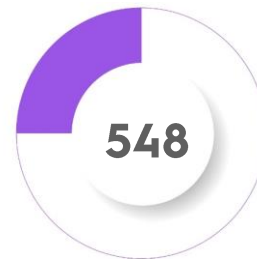
Registered Land Title (m<sup>2</sup>) : 1.378.774,740  
Occupied Area (m<sup>2</sup>) : 1.271.155,220



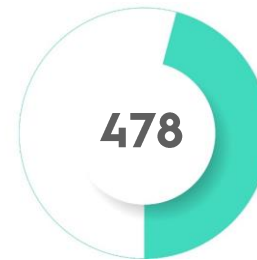
Amphitheatres



Dormitories



Classrooms



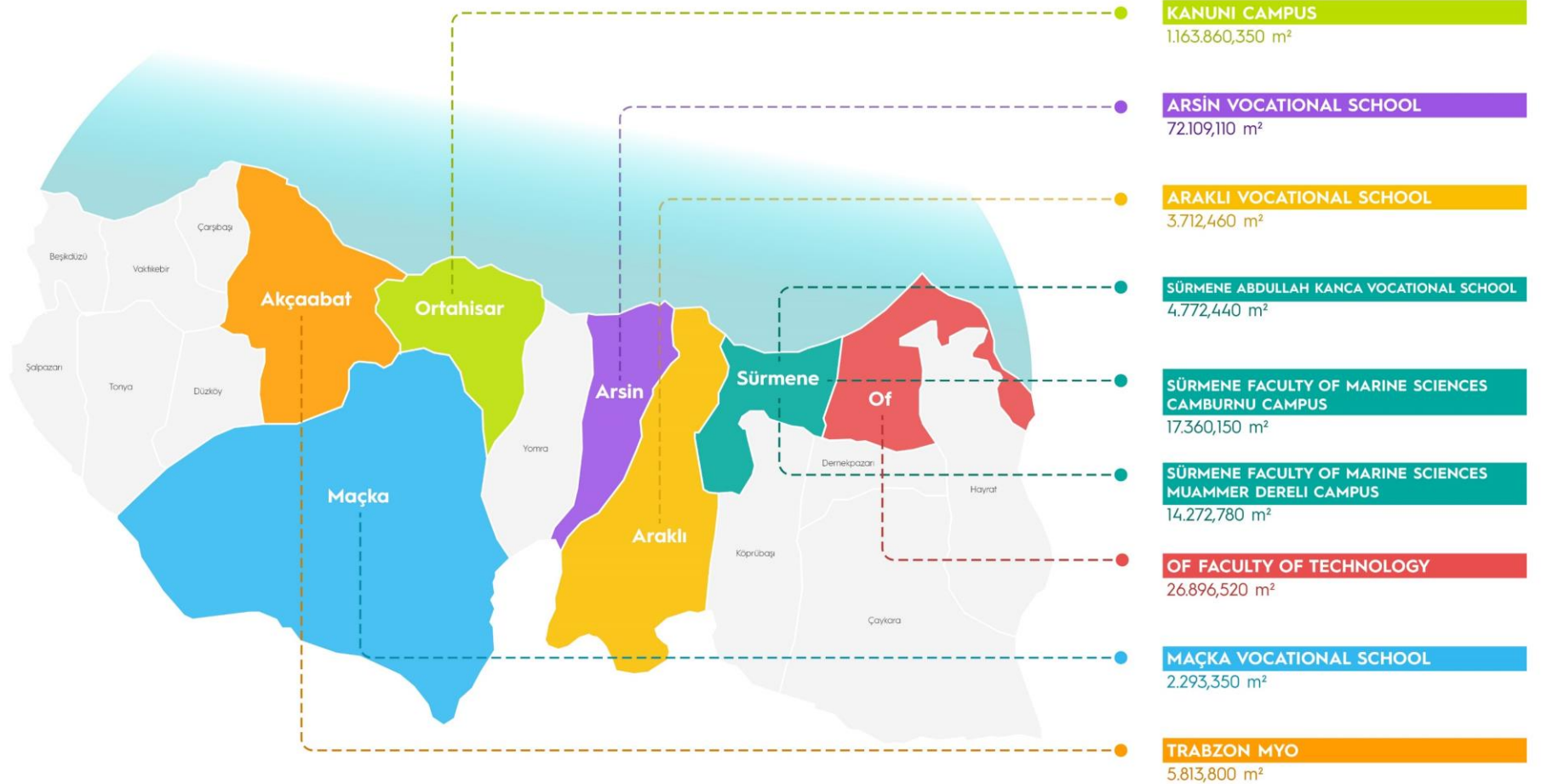
Laboratories



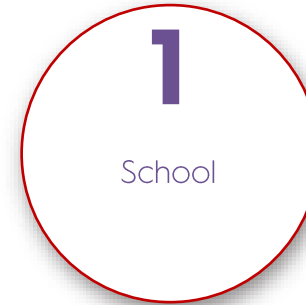
Meeting and  
Conference Halls



## Campuses



## Facts and Figures



English is medium of instruction in **all offered courses** in 5 programs, while **30% of offered courses** in 7 programs are instructed in english.

### Science and Engineering

Associate Degree	3.749
Undergraduate Degree	11.012
Graduate Degree	2.871
<b>Total</b>	<b>17.632</b>

### Health Sciences

Associate Degree	926
Undergraduate Degree	3.918
Graduate Degree	433
<b>Total</b>	<b>5.277</b>

Student  
**31.845**

### Social Sciences

Associate Degree	480
Undergraduate Degree	6.955
Graduate Degree	1.501
<b>Total</b>	<b>8.936</b>

### Total

Associate Degree	5.155
Undergraduate Degree	21.885
Graduate Degree	4.805
<b>Total</b>	<b>31.845</b>

International  
Student  
**1.942**



Students | Alumni



Number of Alumni  
**258.553**



## Staff I Academic

Number of Students  
Per Faculty Member\*Number of Students  
Per Teaching Staff\*\*

	2020	2021	2022	2023	2024	2025
Professor	436	465	467	490	539	532
Assoc. Prof. Dr.	209	149	155	182	190	175
Asst. Prof. Dr.	303	370	386	406	433	448
Lecturer	329	281	282	297	309	298
Research Assistant	876	951	871	754	725	640
<b>TOTAL</b>	<b>2.153</b>	<b>2.216</b>	<b>2.161</b>	<b>2.129</b>	<b>2.196</b>	<b>2.093</b>

\*Faculty Members include Professors, Associate Professors, and Assistant Professors.

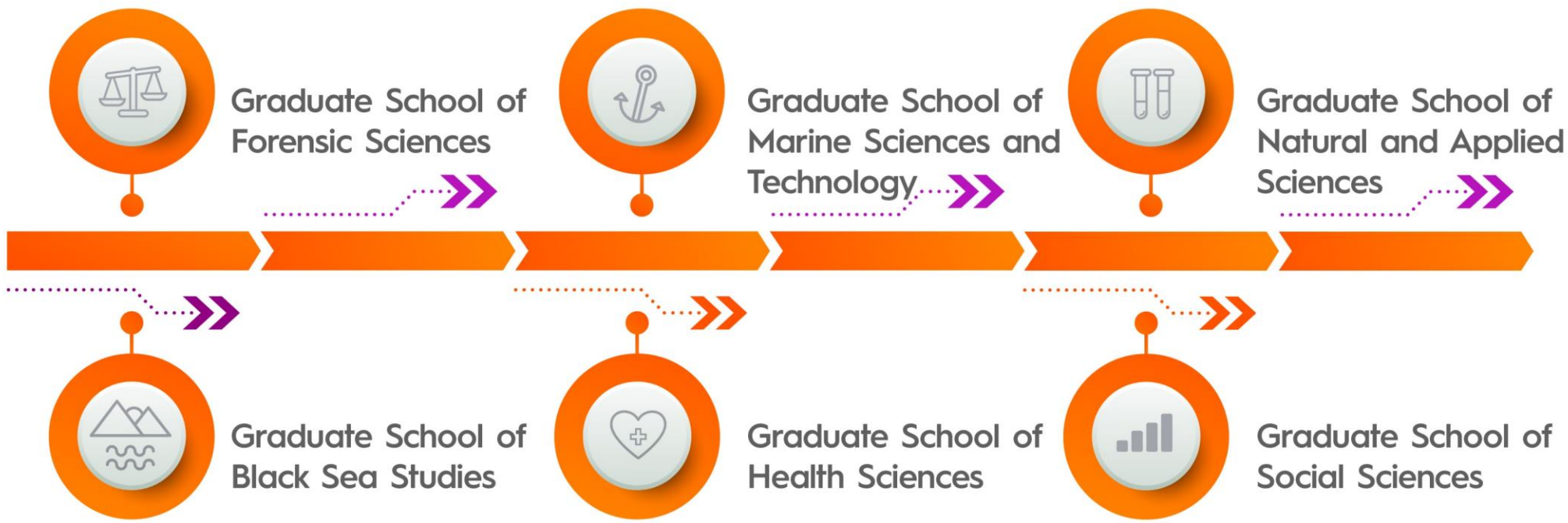
\*\*Teaching Staff include Research Assistants and Lecturers

**Staff I Administrative**





**Academic Unit I Graduate Schools**



## Academic Unit I Faculties



Faculty of Dentistry  
Faculty of Pharmacy  
Faculty of Letters  
Faculty of Science  
Faculty of Economics and  
Administrative Sciences  
Faculty of Architecture  
Faculty of Engineering  
Of Faculty of Technology  
Faculty of Forestry  
Faculty of Health Sciences  
Sürmene Faculty of Marine Sciences  
Faculty of Medicine



## Academic Unit I Vocational Schools

Araklı Ali Cevat Özyurt Vocational School

Arsin Vocational School

Çaykara Vocational School

Maçka Vocational School

Of Vocational School

Vocational School of Health Sciences

Sürmene Abdullah Kanca Vocational School

Trabzon Vocational School



Academic Unit I School



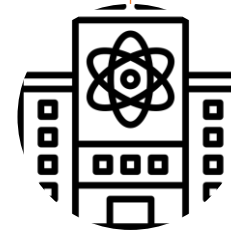


## Application and Research Centers



**Research-  
Oriented**

- Ataturk's Principles and History of Turkish Revolution
- Environmental Problems
- Hazelnut-Tea
- İLAFAR
- Women's and Family Studies
- MANYETAM
- METAM
- SAM
- Landslide
- Earthquake and Structural Health
- Surgery



**Service-  
Education-  
Oriented**

- MERLAB
- Continuing Education Center
- Turkish Language Teaching
- Distance Education



**Interface-  
Oriented**

- Career Development
- TTO

## Strategic Plan

# 4 GOALS- 20 OBJECTIVES- 99 PERFORMANCE INDICATORS

---



To Strengthen Education for Competent Graduates Through an Innovative and Student-Centered Approach

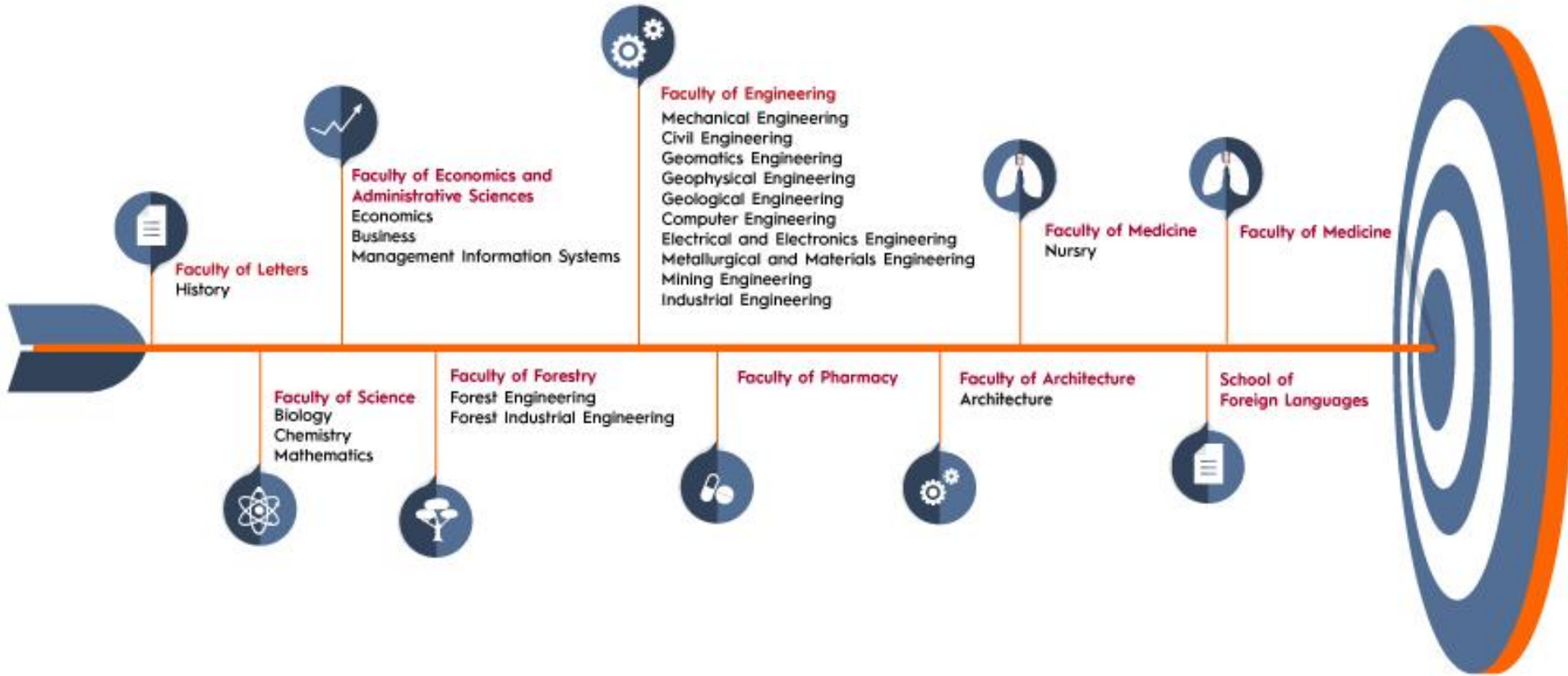
To Conduct Research Responsive to the Needs of Society and Economy by Strengthening the Quality of Being a Research-Oriented University

To Develop Institutional Capacity through a Quality-Oriented Approach

To Contribute to Local, Regional, National, and International Development and Strengthen the Perception of KTU



**Program Accreditation**



37.73% of the programs are accredited. KTU ranks the 9th among state universities in terms of accreditation.



## Institutional Accreditation



Pursuant to the decision of Turkish Higher Education Quality Council (THEQC) dated 23.05.2022, The President of THEQC Prof. Dr. Muhsin KAR presented the "Institutional Accreditation Certificate" to KTU Rector Prof. Dr. Hamdullah ÇUVALCI.

## Research University

KTU has been officially recognized as a "Research University" by the Council of Higher Education.



**KTU IS ENTITLED TO BE  
A RESEARCH UNIVERSITY**



KTU is among 8 research universities with the Full Accreditation Certificate.



Library

Books



**127.124**

Number of Printed Books



Journals



**2.987**

Number of Printed Journals



E-Books



**787.082**

Number of Electronic Books



E-Journal



**71.512**

Number of Electronic Journals



Others



**1.982**

CD ve DVD



Theses



**10.330**

Number of Graduate Theses



● Number of Halls

**13**

● Area (m<sup>2</sup>)

**4.140**

● Capacity

**1.067**

**persons**

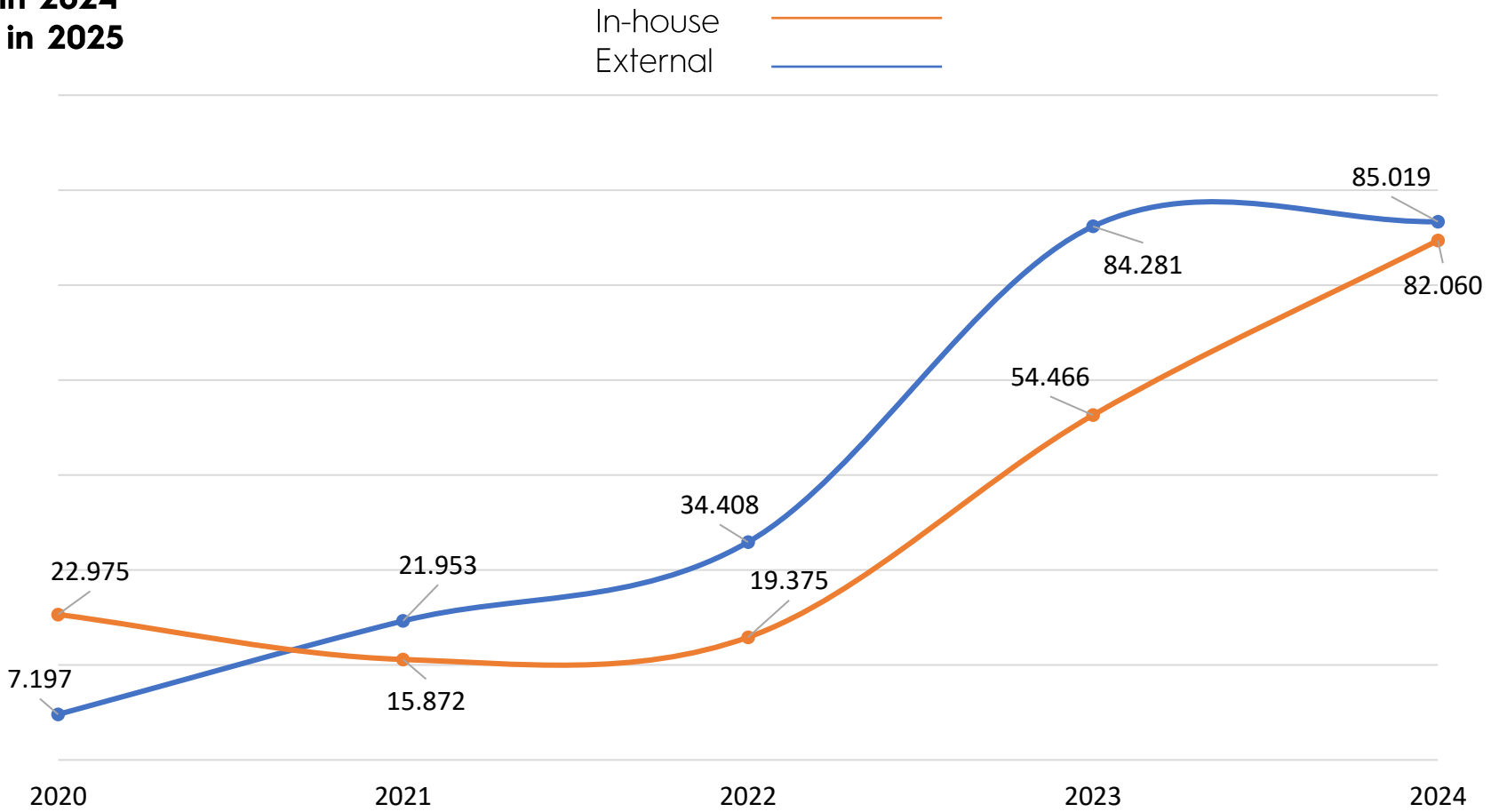




### Research and Development (R & D)

Additional Research Budget funded with  
Research University Status  
**15 Million TL in 2024**  
**29 Million TL in 2025**

Project Budgets Funded by KTU and Other Funding Supporters





## Internationalization

The Office of International Relations, consisting of three sub-coordinations, is established to enhance the functionality and international recognition of international collaborations, partnerships, and exchange programs. It.



Community of Mediterranean Universities

Ngo official partner of UNESCO (consultative status)

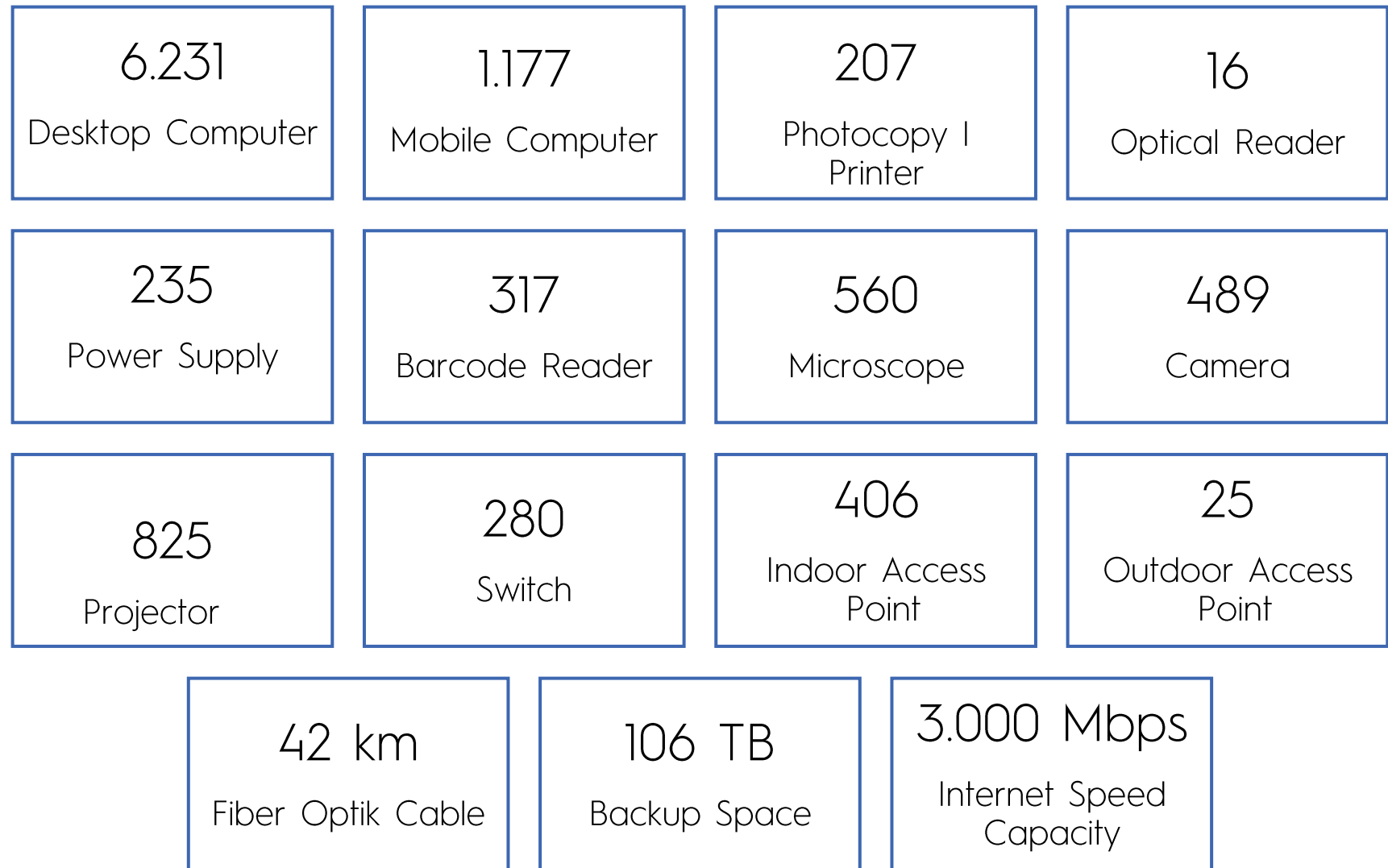


**Laboratories**

Number of Laboratories Registered in the Ministry of Industry and Technology Research Infrastructure and Laboratory Portal	29
Number of Laboratories Used for Educational Purposes	450
Number of Laboratories Used for Research Purposes	122
Number of Computer Labs	176
The Number of Laboratories that Provide Services to the Public and Private Sectors within the Scope of Revolving Funds	130



## Information Resources | Physical and Technological Opportunities



## Farabi Hospital



Location	: Tertiary University Training Hospital
Features	: Only Tertiary Referral Hospital in the Region
Indoor Space	: 94.355 m <sup>2</sup>
Geographical Service Area	: Eastern Black Sea Region and Surrounding Provinces
Number of Population Served	: 4,5 Million
Registered Inpatient Bed Availability	: 831 (Including Beds in Intensive Care Unit)
Number of Beds in the Emergency	: Adult Emergency 37 + Pediatric Emergency 21 = 58
Number of Beds in Intensive Care Unit	: 79





## Drug and Pharmaceutical Technology Application and Research Center (İLAFAR)

The first and only preclinical research center established in our region to develop drug substances and formulations for human, veterinary and pesticides

### 1. Educating qualified researchers

### 2. Contribution to our domestic and national pharmaceutical sector

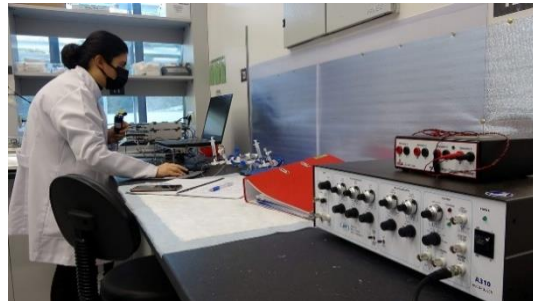
- ▶ *New molecules*
- ▶ *New formulations*

### 3. Cooperation (Projects)

- ▶ *Pharmaceutical Industry*
- ▶ *Public Institutions*
- ▶ *Universities*



Supporting Program for Attraction Centers



**Accreditation Certificate  
for OECD Good  
Laboratory Practice  
(GLP)**

Good Laboratory Practices (GLP)

## Good Medical Practices and Medical Simulation Center

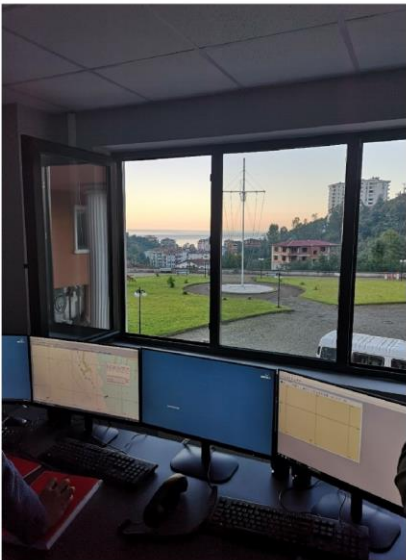


Surgical simulation  
 Pediatric emergency simulation  
 Newborn simulation  
 Maternity simulation  
 Intensive care simulation  
 Adult emergency simulation  
 Pediatric Basic and Advanced Life Support Course  
 Basic and Advanced Life Support Course for Adults  
 Emergency Medicine Trauma Course  
 First Aid Training  
 Training for Trainers of Basic Nursing Simulation  
 Training for Family Physicians on Basic Life Support and Advanced Airline  
 Training for Midwifery Simulation Trainers in Obstetrics  
 ATLS Provider Course  
 Training for International Simulation Trainers

## Ship Bridge Simulator



The Fully Equipped Ship Bridge Simulator System



The Fully Equipped Ship Bridge Simulator System, which allows students to put the theoretical knowledge they have learned into practice, visualizes 360° horizontally and changes its vertical view up and down. Adapting to different environmental, weather and sea conditions, it has the capacity to flip the image from the virtual bow direction to the bridge dovetails. It is equipped with the necessary maneuvering and rudder consoles for these situations and the equipment necessary for the cruise control of a classical and modern ship.



## KTU DENAR-I Research Vessel



Designed and equipped for navigation and scientific studies to carry out close coastal voyages, the vessel was launched on 11 September 2014. It has the ability to participate in all kinds of National and International activities in the blue homeland and on the open seas thanks to its capacity and equipment.




**KTU DENAR-I**



METAM Works for the development of the application areas of additive manufacturing technologies, especially in the medical and medical device sector. Within the scope of R&D processes, design, pilot/prototype production, digital analysis solutions, and testing services are provided. With its qualified personnel and advanced technological infrastructure, METAM continuously expands its product and service range within the framework of ISO 13485 Quality Management System.

Personalised medical applications stand out among METAM's most important services.



**CMDP**  
Cazibe Merkezlerini  
Destekleme Programı

**Project for the Development  
and Commercialization of  
Patient-Specific Implant**

Ministry support budget  
Total contribution **47.300.000 TL**



**KARADENİZ TEKNİK ÜNİVERSİTESİ MEDİKAL CİHAZ  
TASARIM VE ÜRETİM UYGULAMA VE ARAŞTIRMA  
MERKEZİ (METAM)**

UNİVERSİTE MAH. KTÜ KAMPÜSÜ BİLİMSEL ARAŞTIRMA MERKEZİ KAT: 1  
ORTAĞAĞA - TRABZON - TÜRKİYE

DESIGN, PRODUCTION AND SALES OF POLYMER AND METAL IMPLANT,  
PROSTHESIS AND ORTHOSIS

with a scope of  
**EN ISO 13485:2016**  
Has established a management system in accordance  
with international Medical Devices Quality Management System Standard  
"Following elements of the standard are included"  
"3.8.1" "3.8.2" "3.8.3" "3.8.4" "3.8.5"

Certificate No : M 11037  
Initial Certification Date : 23 June 2023  
Certification Date : 23 June 2023  
Expiration Date : 22 June 2024

Kiwa Belgelendirme Hizmetleri A.Ş.  
02028-8 Caddesi No: 13 Tepeören Turku  
Merkezi / Turkey  
Tel : +90 238 188 23 75  
Faks : +90 238 188 23 74  
info@kiwa.com.tr  
www.kiwa.com.tr

General Manager



ISO 13485:2016

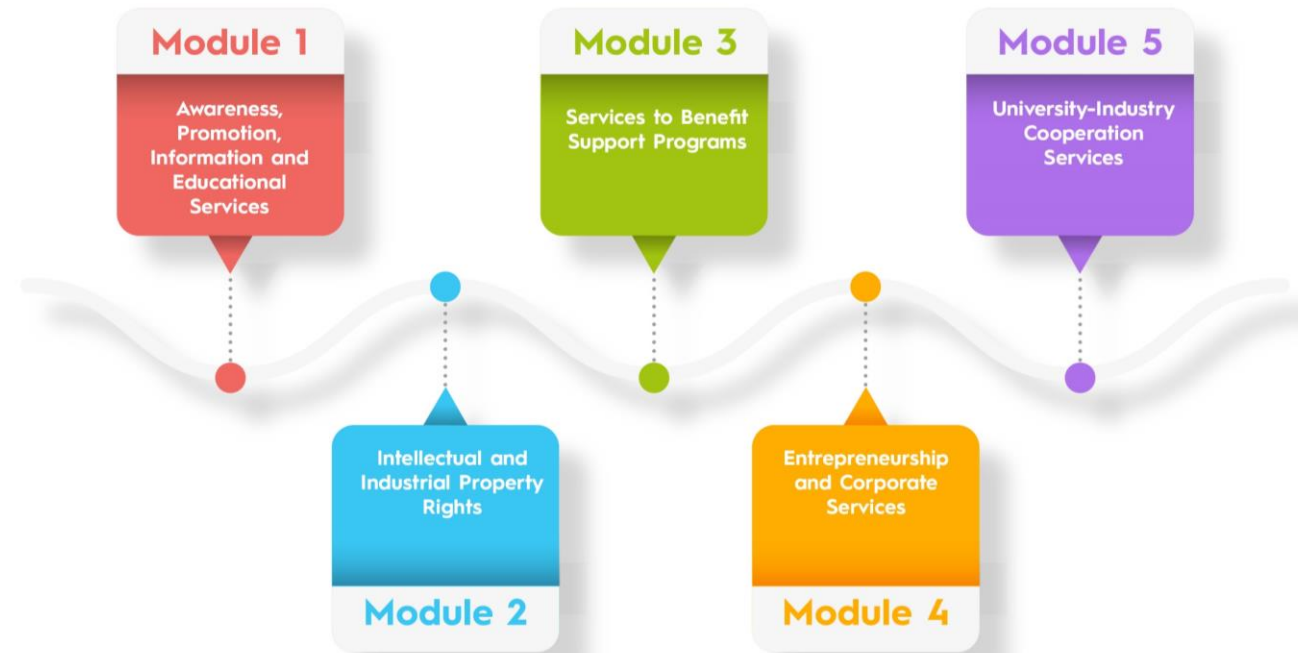
Last Modified: 23 June 2023 9:00

## Patient-Specific Implant Technologies



## Technology Transfer Application and Research Center (TTM)

TTM was established on the purposes of being a guidance to mainly Trabzon province and Eastern Karadeniz Region in contributing to the R&D oriented information and production needs in the region, developing university- industry cooperation activities in the region, ensuring the protection, marketing and commercialization of Intellectual and Industrial Property Rights, establishing and developing entrepreneurial culture, business guidance, consulting and training services.

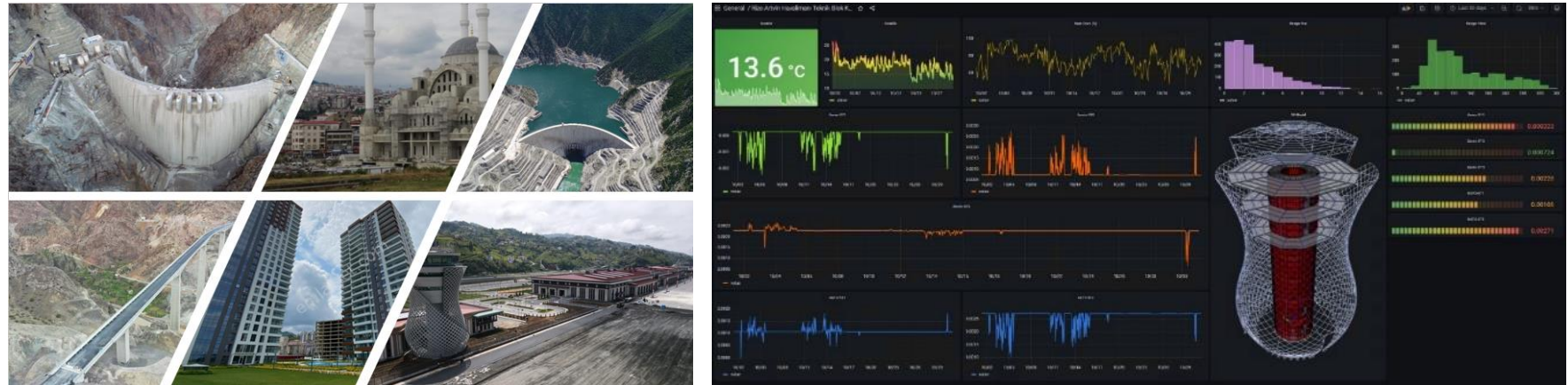


## Structural Health Monitoring Laboratory

The Structural Health Monitoring System includes the process of 24/7 monitoring and evaluating the current structural situation with sensitive sensors placed in the building.

### The Structural Health Monitoring System provides the followings:

- ▶ Monitoring structural behaviors of buildings
- ▶ Determination of the structural conditions after an earthquake
- ▶ Providing the life safety protection and emergency response by activating the emergency warning systems in case of exceeding the threshold values determined for the building.
- ▶ Determining the estimated lifetime of the structures by taking into account the reactions of the monitored structures to environmental factors.

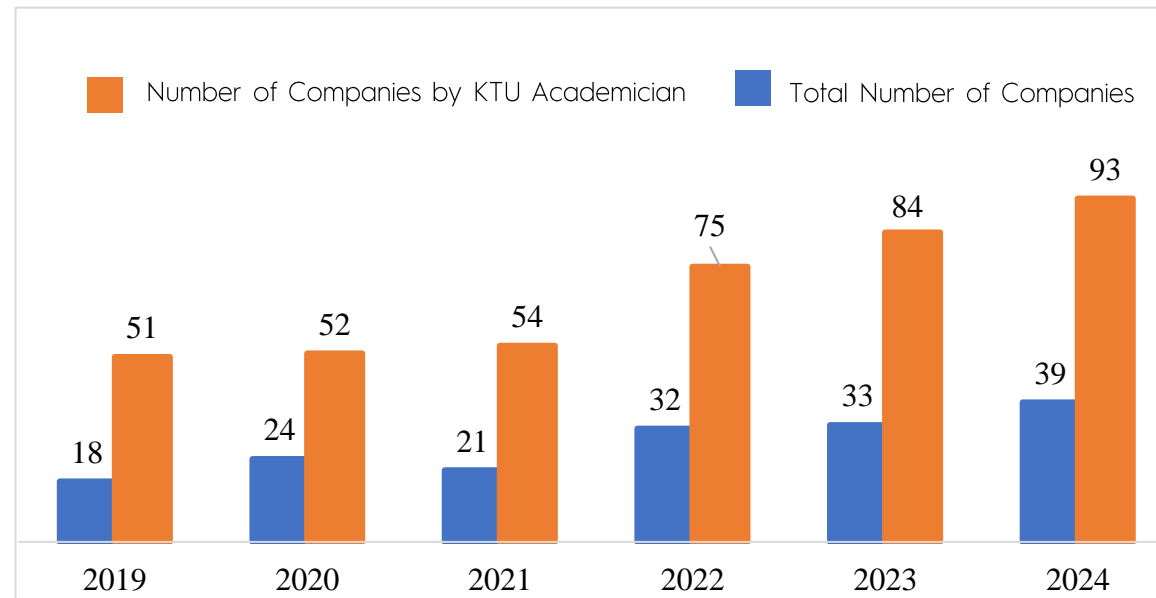


## Trabzon Technology Development Zone

### Trabzon Technocity



Trabzon Technopark engages in activities aimed at enhancing the competitiveness of companies by fostering an innovation culture and enhancing their capability to generate technology. Additionally, it undertakes activities to accelerate the structuring of technology and industry-focused projects at universities.



**\$1.22 Million  
Export**

**Accommodation****DOĞU KARADENİZ DIRECTORATE OF DORMITORIES**

2-PERSON ROOM: 18

3-PERSON ROOM: 739

4-PERSON ROOM: 43

**CAPACITY: 2.425****TRABZON DIRECTORATE OF DORMITORIES**

1-PERSON ROOM: 2

2-PERSON ROOM: 131

3-PERSON ROOM: 208

4-PERSON ROOM: 408

**CAPACITY: 2.520**

Accommodation



**KORU OTEL**  
108 ROOMS | CAPACITY OF 220 GUESTS



**SEASIDE FACILITIES**  
35 ROOMS | CAPACITY OF 70 GUESTS







## Sports Facilities I Kanuni Campus

Tennis Court	810,607 m <sup>2</sup>
Hasan Polat Physical Education and Sports Center	3.283,184 m <sup>2</sup>
Grass Pitch Sports Center	1.547,860 m <sup>2</sup>
Stadium Area	8.928,635 m <sup>2</sup>
Tennis Court (Northeastern of Bazaar Building)	610,201 m <sup>2</sup>
Miniature Football Pitch (Northeast of Bazaar Building)	615,227 m <sup>2</sup>
Miniature Football Pitch (Southwest of Indoor Sports Facility)	460,878 m <sup>2</sup>
Basketball/Volleyball Court (North of Indoor Sports Facility)	564,942 m <sup>2</sup>
Basketball Court (Southwest of Indoor Sports Facility)	392,854 m <sup>2</sup>



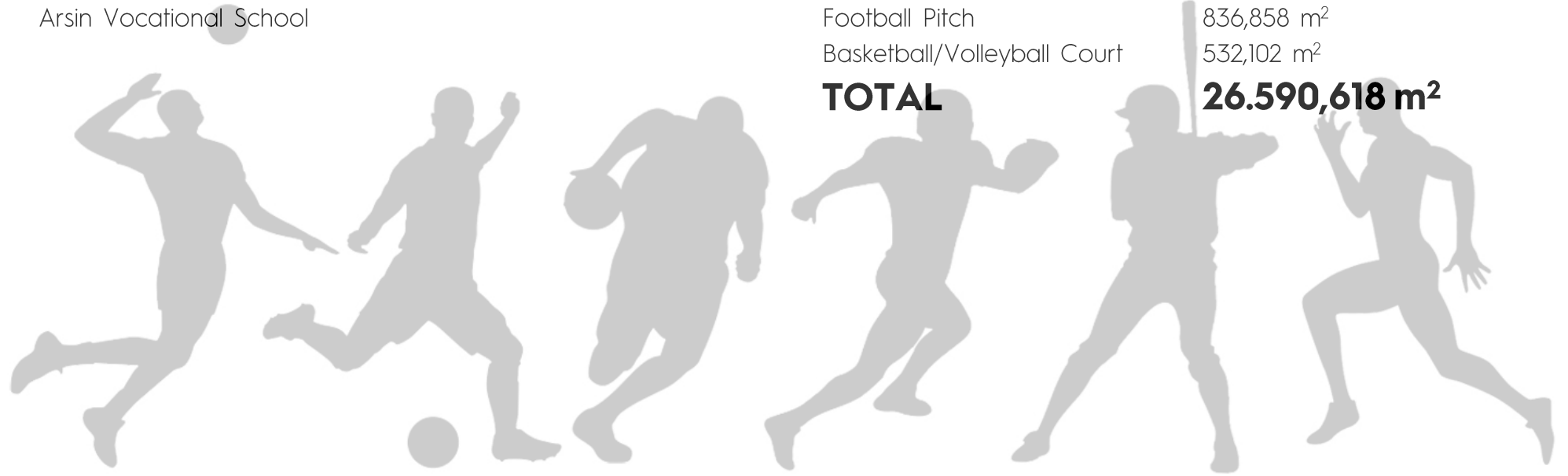
## Sports Facilities I Other Campuses

### Seaside Facilities

### Sürmene Faculty of Marine Sciences Çamburnu Campus Of Faculty of Technology

### Arsin Vocational School

Pool	3.189,244 m <sup>2</sup>
Tennis Court 1	262,139 m <sup>2</sup>
Tennis Court 2	259,834 m <sup>2</sup>
Tennis Court 3	264,530 m <sup>2</sup>
Volleyball Court	292,385 m <sup>2</sup>
Basketball Court	484,063 m <sup>2</sup>
Football Pitch	912,063 m <sup>2</sup>
Basketball/Volleyball Court	354,748 m <sup>2</sup>
Football Pitch	942,313 m <sup>2</sup>
Tennis Court	545,951 m <sup>2</sup>
Football Pitch	836,858 m <sup>2</sup>
Basketball/Volleyball Court	532,102 m <sup>2</sup>
<b>TOTAL</b>	<b>26.590,618 m<sup>2</sup></b>



Sports Facilities



Grass Pitch



Olympic Pool



Indoor Sports Hall



Miniature Pitches





## Congress and Culture Centers

### Atatürk Cultural Center

- Hasan Saka Hall | Capacity of 940 People
- Reşit Tarakçıoğlu Hall | Capacity of 235 People

### Prof. Dr. Osman Turan Congress and Culture Center

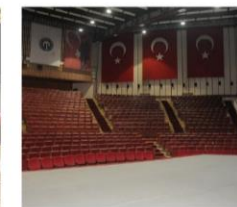
- Hasan Turan Hall | Capacity of 587 People
- Fahri Kuran Hall | Capacity of 190 People
- Four Seminar Halls | Capacity of 50 -90 People
- Two Exhibition Halls | 250 m<sup>2</sup> and 600 m<sup>2</sup>
- Cocktail Hall | Capacity of 220 People



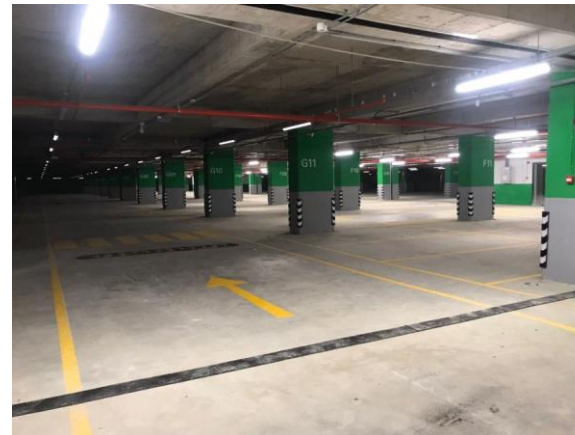
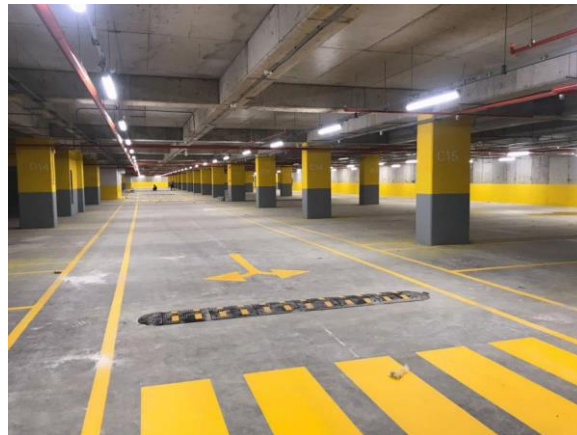
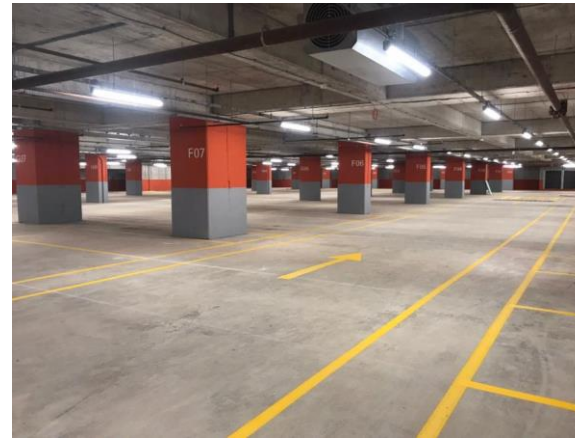
OSMAN TURAN  
CULTURE CENTER



ATATÜRK CULTURE CENTER



## Parking Area



- 42.400 m<sup>2</sup> parking garage | parking lot
- 4 Floors | 10 Blocks
- 1.350- Vehicle capacity
- 66 Disabled parking spaces
- Automatic license plate recognition
- Direction for occupation

## Lifelong Learning

Lifelong learning covers all the learning activities that individuals will perform throughout their lives to improve their knowledge, skills, and competencies in relation to their personal, social, and business life. Lifelong learning activities are carried out by the Continuing Education Center and the Distance Education Application and Research Center. A certificate of achievement or a certificate of participation is given to the participants from all ages and statuses.

- Occupational Health and Safety Training
- Course Completion Training for Freelance Consultant Engineer
- Certificate Program for Real Estate Literacy
- Certificate Program for Building Information Modeling (BIM) and Infrastructure Projects Application
- Certificate Program for Strategies to Be a Successful Student in Distance Education?
- Coding and Robotics Training
- Certificate Program for Training of Robotic Programming Trainer
- Certificate Program for Pardus Education
- Certificate Program for Basic Information Technologies
- Chess Course
- Guitar course
- Violin Course
- Baglama Course
- Ney Course
- Jewelry Design Course
- Wood Painting Course

## Lifelong Learning



## Nutrition



In our university, students, academic and administrative staff benefit from the dining halls affiliated to the Health, Culture and Sports Department for their nutritional needs. They are provided with a four course lunch. Menus are prepared by our food engineer in our kitchen on Kanuni Campus in a way that is adequate and balanced, taking into account the satisfaction of our students, the energy, and nutritional elements they need to take in one meal. In this process, attention is paid to hygiene rules.

### Cafeterias on the Kanuni Campus (Central Campus)

- Nejmi KIRKBİR Student Cafeteria
- Faculty of Medicine Student Cafeteria
- Cafeteria for Academic and Administrative Staff

### Cafeterias Outside the Kanuni Campus

- Student Cafeteria in the Sürmene Faculty of Marine Sciences
- Student Cafeteria in Of Faculty of Technology
- Student Cafeteria in Sürmene Abdullah Kanca VET
- Student Cafeteria in Araklı Ali Cevat Özyurt VET
- Student Cafeteria in Arsin VET
- Student Cafeteria in Trabzon VET

### Fees

Students	30 ₺
Administrative Staff	60,00 ₺
Academic Staff	119,00 ₺



Student Cafeteria



Staff Cafeteria



## Special Needs Support



Necessary measures are taken and arrangements are made for the disabled students studying at KTU to facilitate their learning life, prepare the necessary academic environment, ensure their full participation in the education processes, and to support their social life.

Besides, the Council of Higher Education puts effort to make Higher Education Institutions in Turkey accessible to all students, with the work it has done under the titles of "Accessible and Barrier-Free Education".

In this context, our University has been deemed qualified to receive for the Orange or Green Flag for the categories specified below within the scope of the 2022 Barrier-Free University Awards:

- Faculty of Medicine - Spatial Accessibility- Orange Flag
- Faculty of Dentistry- Spatial Accessibility- Orange Flag
- Faculty of Letters- Spatial Accessibility- Orange Flag
- Faculty of Letters - Educational Accessibility- Green Flag



Special Needs Support



Chess Tournament



Seminar on Inclusion



Traditional Breakfast Meeting

## Student Clubs



There are student clubs established by student initiatives where they can spend their extracurricular time, gain organizational, management, teamwork, and communication skills, and healthily develop their talents and personalities.





**@tcktu1955**

[facebook.com/tcktu1955](https://facebook.com/tcktu1955)



**@tcktu1955**

[twitter.com/tcktu1955](https://twitter.com/tcktu1955)



**@tcktu1955**

[youtube.com/tcktu1955](https://youtube.com/tcktu1955)



**@tcktu1955**

[linkedin.com/tcktu1955](https://linkedin.com/tcktu1955)



**@tcktu1955**

[instagram.com/tcktu1955](https://instagram.com/tcktu1955)